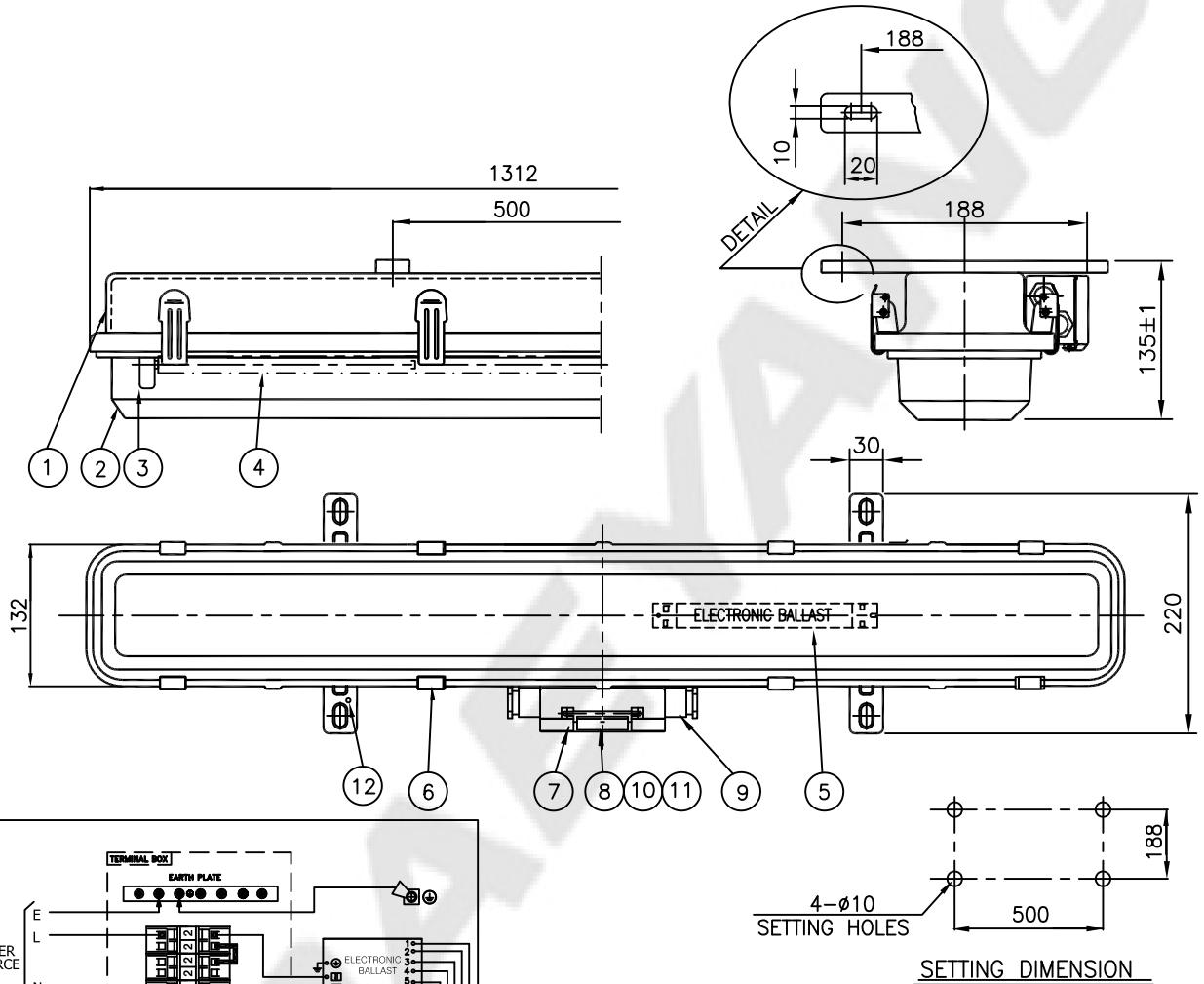


CAPACITY	SYMBOL/ SERIAL NO.	CIRCUIT DIAGRAM
AC 230V, 50Hz		
36W x 2		



12	OUTSIDE EARTH BOLT	STAINLESS STEEL304	1	M5	6	LATCH	STAINLESS STEEL304	8	
11	TERMINAL BLOCK	-	1	CLAMPING 4P	5	ELECTRONIC BALLAST	-	1	
10	INSIDE EARTH BOLT	STAINLESS STEEL304	4	M4	4	LAMP	-	2	
9	CABLE GLAND	NYLON	4	Ø12.1~15.5	3	LAMP HOLDER	POLYCAR-BONATE	4	
8	TERMINAL BOX COVER	POLYCAR-BONATE	1		2	GLOBE	POLYCAR-BONATE	1	
7	TERMINAL BOX	POLYCAR-BONATE	1		1	BODY	STEEL	1	
NO	NAME OF PARTS	MATERIAL	Q'TY	REMARKS	NO	NAME OF PARTS	MATERIAL	Q'TY	REMARKS

APPROVED	B. K. KIM	UNIT	MM
CHECKED		SCALE	N/S
DRAWING	B. I. KIM	COLOR	N-9.3
DATE	2015.12.04	IP	56

TITLE; FLUORESCENT CEILING LIGHT (SURFACE TYPE) FOR MARINE USE

	MODEL NO.	FL240WS-0235EISWNm15h12	WEIGHT	7.7 Kg
	DWG NO.	L11480882	SHEET NO.	32